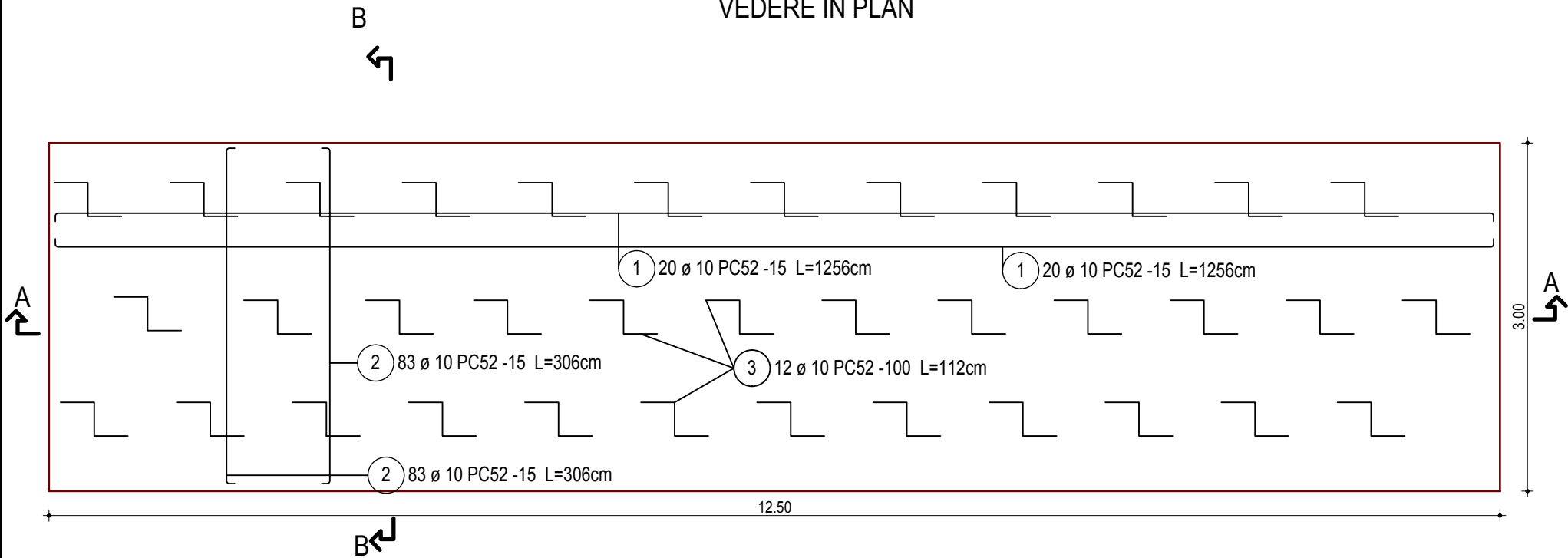
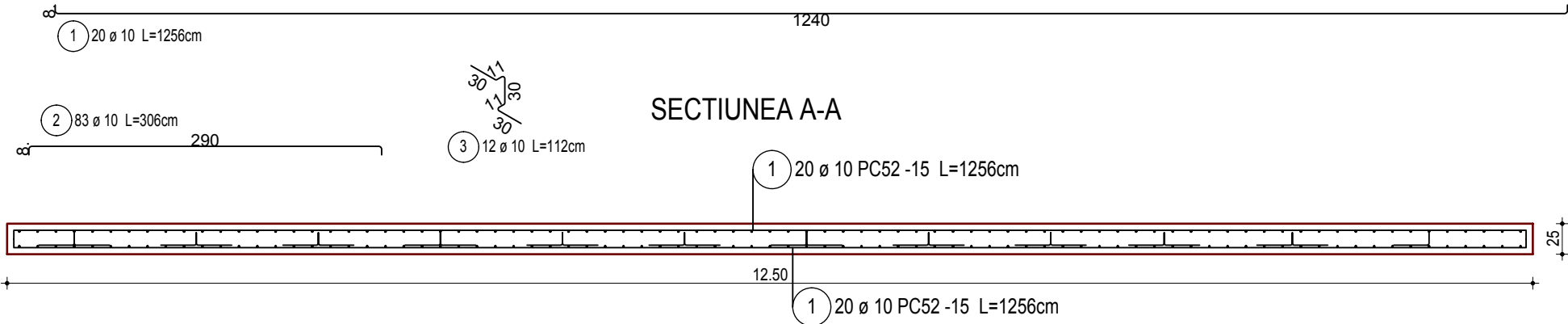


PLAN ARMARE - PLATFORMA CONTAINER ECHIPAMENTE SI CONTAINER PERSONAL

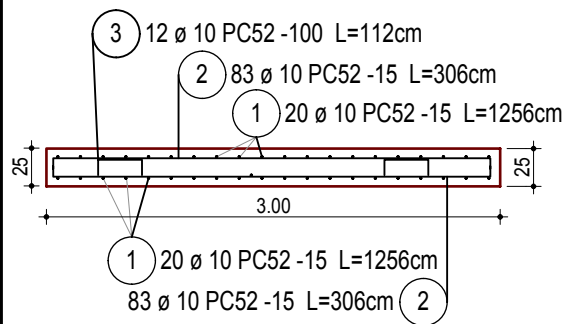
Scara 1:50
VEDERE IN PLAN



SECTIUNEA A-A

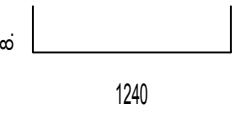
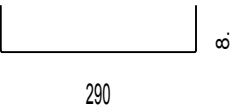
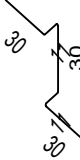


SECTIUNEA B-B



Beton simplu: C8/10(BC 10 - B150)
Beton armat: C18/22,5 (BC 22,5 - B300)
Otel beton: Ø10 PC52
Acoperire beton: 5 cm

Lista armare cu fasonari

Poz.	Buc.	ø	Unit.	Cal.	Bare cotate	Total	Greut
		[mm]	Lung.	Otel	(fara scara)	Lung.	[kg]
1	40	10	12.56	PC52		502.40	309.98
2	166	10	3.06	PC52		507.96	313.41
3	36	10	1.12	PC52		40.32	24.88

Greutate totala OB37 (kg): 0.00 kg
Greutate totala PC52 (kg): 648.27 kg
Greutate totala PC60 (kg): 0.00 kg
Greutate totala OB37 + PC52 + PC60 (kg): 648.27 kg

Nota: Pentru detalii structura metalica containere consultati desenul SE-C6

Nota: Pentru detalii compartimentare interioara containere consultati desenul SE-D4

Verificator/expert	Titlu / Nume	Semnatura	Cerinta	Referat / Expertiza nr / Data	
S.C. PANMITI CON S.R.L. CUI RO 10110990, J18/9/1998, Mun. Tg.-Jiu, Str. Aleea Ioan Slavici, Nr.3, Bl.3, Sc.1, Ap.1, Jud. Gorj				Beneficiar: COMUNA CAPRENI	Pr.nr.: 18/2015
				Amplasament: COMUNA CAPRENI, JUD. GORJ	
Specificatie	Titlu / Nume	Semnatura	Scara	Titlul proiectului: CONSTRUIRE CANALIZARE SI STATIE DE EPURARE APE UZATE, COMUNA CAPRENI, JUDETUL GORJ	Faza: P.T.
SEF PROIECT	ing. Fintina Adrian		1:50		
PROIECTAT	ing. Vladoiu Gheorghe		Data: 11/2015	Titlul plansei: PLAN ARMARE - LUCRARI REZISTENTA PLATFORMA FIXARE CONTAINERE ECHIPAMENTE SI PERSONAL	Pl. nr.: SE - R7
DESENAT	ing. Vladoiu Gheorghe				